

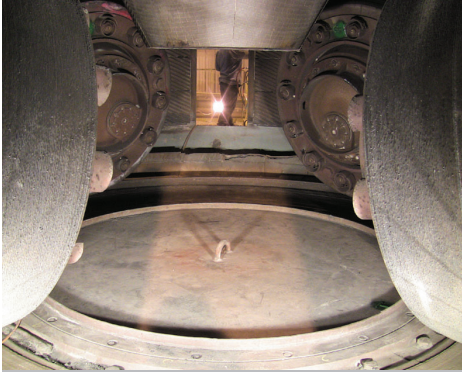
## APPLICATIONS FOR CEMENT



# WE SOLVE YOUR WEAR PROBLEMS

Corodur® Fülldraht has been an industry leader in the area of wear protection for 35 years.

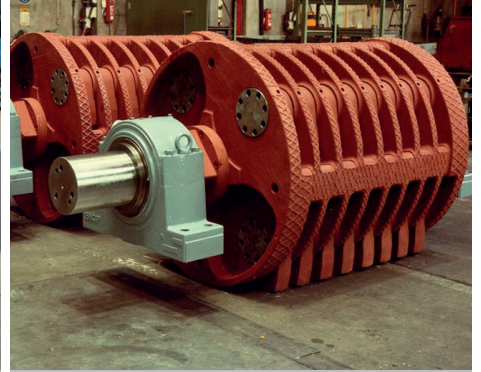
We specialise in the manufacture of high quality consumables for arc-welding and for thermal spraying. The product range includes flux-cored wires for OPEN ARC (FCAW), MIG (MGAW) and submerged arc (SAW) welding. We also supply stick electrodes of equivalent composition as well as a range of tungsten carbide products for the most extreme wear conditions.



ROLLERS AND TABLE



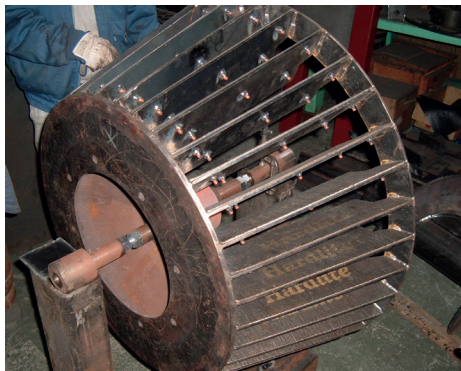
FAN



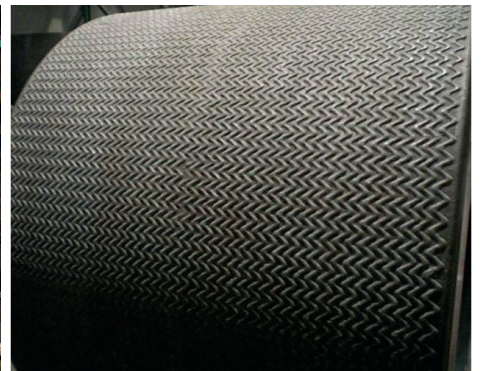
DISCS & HAMMERS



CONES



SEPARATOR CAGE



ROLLER PRESS

Whatever your requirements, from quarry through to shipping,



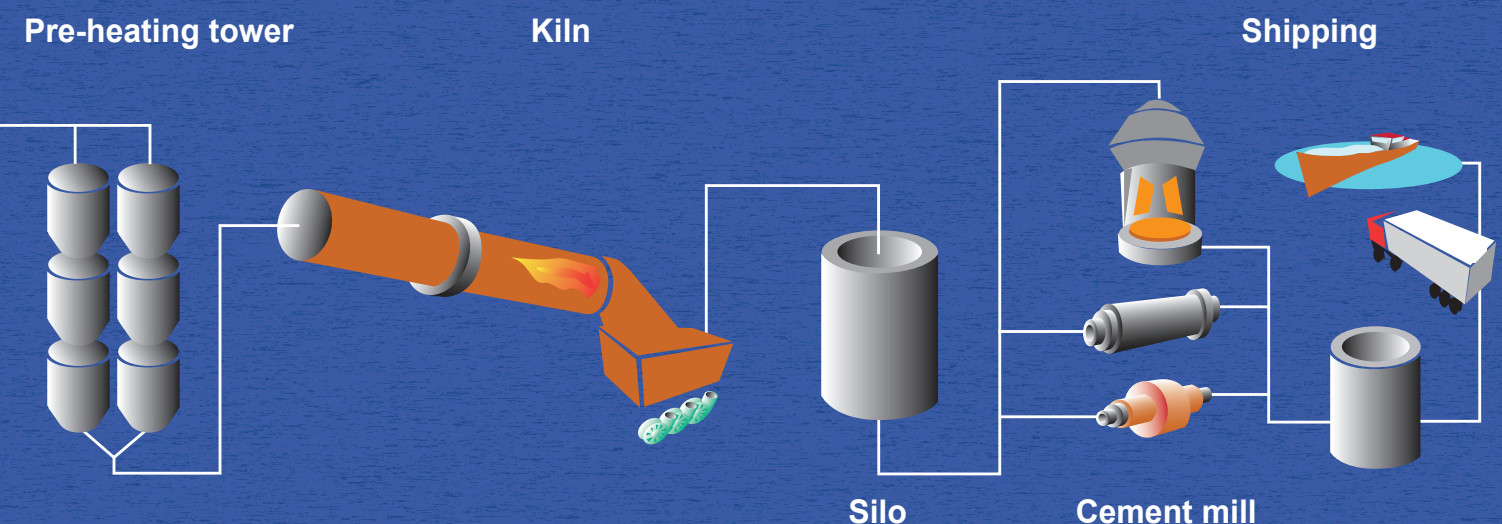
## Corodur® Solutions for Cement

You can rely on Corodur® to provide tailored end-to-end wear protection solutions, allowing you more time to focus on your core business needs. Our qualified and experienced service team will guide you and recommend the right product and method. We develop the best solution for your specific needs.

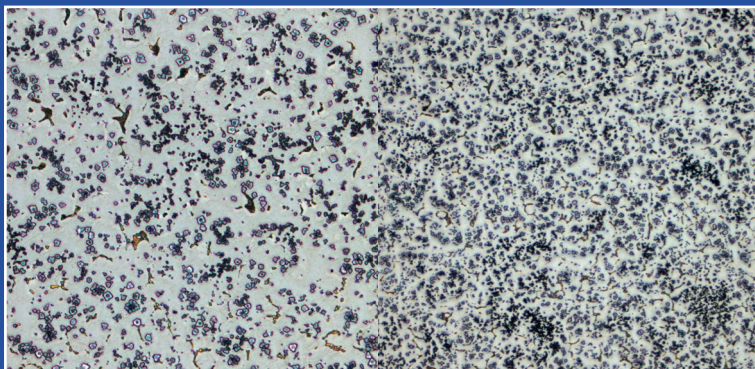
Flux Cored Wires	Hardness	Applications
CORODUR® 250 K	220 – 250 HB	Hammers
CORODUR® 600 TIC	56 - 58 HRc	Roller Press Rolls, Hammers
CORODUR® 607 TIC	57 - 59 HRc	Roller Press Rolls, Hammers
CORODUR® 760	55 - 57 HRc	Roller Press Rolls, Hammers
CORODUR® 56	58 – 62 HRc	Wear Plates, Tubes, Grinding rolls and tables, Cones separators
CORODUR® 61	62 – 65 HRC	Wear Plates, Fan, chutes, hoppers, bins
CORODUR® 55 Mo	57 – 60 HRc	Grinding rolls and tables

**Benefit from our experience and our know-how!**

**Corodur® can provide a solution to suit your specific needs**



# NEW DEVELOPMENT

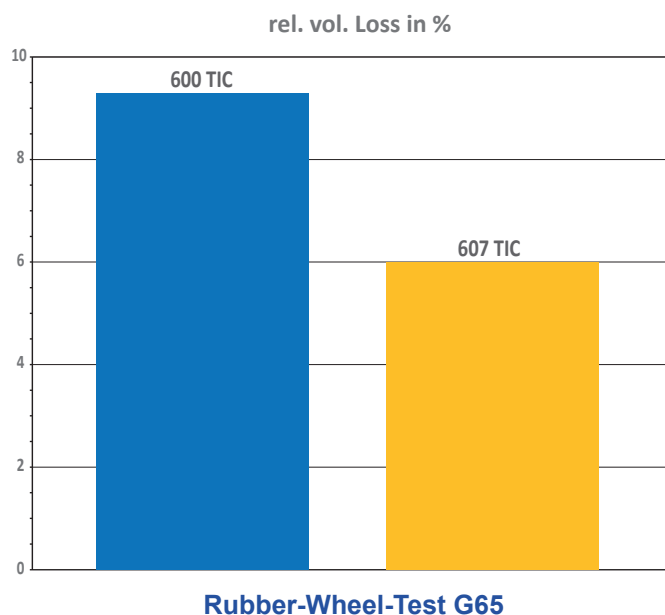
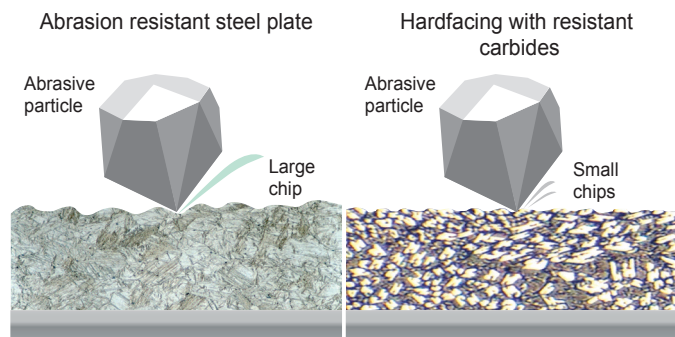


## CORODUR® 607 TIC

Corodur® 607 TIC is the latest product development for applications in the Cement industry. 607 TIC provide superb wear protection against abrasion, pressure and impact. The deposit contains extremely fine dispersed titanium carbides in a high chromium martensitic matrix. The deposit is crack-free. Corodur® 607 TIC is a premium open arc wire to increase lifetime and to reduce down time.



Sieve made by COROPLATE 9100



**CORODUR FÜLLDRAHT GMBH**  
Gießerallee 37  
D - 47877 Willich

Telephone: +49 (0) 2154 8879-0  
Fax: +49 (0) 2154 8879-79

info@corodur.de | www.corodur.de